

2024

# SURVIVAL GUIDE



Burn in the Forest  
Burning Man Vancouver's Official  
Regional Event  
July 25-29, 2024  
Merritt, BC



**We are thrilled** to have you join us for an extraordinary adventure this July! Burn in the Forest, or BitF, is an annual event inspired by and rooted in the 10 Principles of Burning Man, where everything at the gathering is created by participants as a form of self-expression and as a gift to each participant. With a rich history spanning over two decades, BitF has evolved into a vibrant community-driven experience. Participants come together to co-create special experiences, to exercise self-expression and radical inclusivity, while exploring awe-inspiring art installations, interactive theme camps and workshops, performances, and so much more.

As we gather in this beautiful location in Merritt, BC, the safety of all attendees is paramount for us to create an environment where everyone can freely express themselves.

This **BitF 2024 Survival Guide** has been thoughtfully curated to provide you with valuable information to safely navigate BitF 2024, including guidance on personal well-being, consent, fire safety, and other crucial elements. We encourage you to read this survival guide carefully, (THAT MEANS PLEASE READ IT! Yes, all of it!) and take responsibility for your safety and the safety of those around you.

By actively participating and fostering a culture of care, we collectively create a memorable and transformative experience, while also prioritizing the well being of everyone involved. We are excited to embark on this journey with you and look forward to celebrating the magic of BitF while embracing the spirit of the Burner culture!





# Acknowledging the Indigenous Lands and the Nlaka'pamux People

As we come together for BitF 2024, we must acknowledge and show respect for the traditional territory of the **Nlaka'pamux people**. This land stretches from the Fraser Canyon and Princeton in the south, to Cache Creek and Kamloops in the north. The Ntstlatko river that passes through the BitF site holds cultural significance, as it flows through two Nlɛʔkepmx Reservations of the Coldwater Indian Band, continuing on to Merritt and connecting with the Nicola River. These lands have been home to Indigenous communities for generations, and we recognize the importance of honouring their enduring connection.

We invite you to consider the rich history and heritage of the Nlɛʔkepmx people and other Indigenous communities. We encourage you to engage in meaningful conversations, listen to the voices of Indigenous communities, and strive to build respectful relationships. Let's enjoy BitF while being mindful of the deep-rooted connections this land holds for the Indigenous communities who have lived here for countless years.



# CODE OF CONDUCT

All participants attending BitF must adhere to the Greater Vancouver Interactive Arts Society (GVIAS) [Participant Code of Conduct](#), [linked here](#).

## Respect Yourself

The environment and experience may push you in different ways than expected. Occasionally, you may feel uncomfortable or out of sorts. We trust that only you can fully understand your own comfort levels and personal boundaries. Please be conscious of your well-being and aware of your own needs. Practice self-care and remember the value of self-reliance in our community, but do reach out to others for support if you need it.

## Respect One Another

Be aware of your behaviour, choices, and how they impact other members of our community. Keep consent and personal autonomy at the forefront of all your interactions. Check in with yourself and others to ensure mutual respect and consent.

## Respect the Land and Surroundings

There are very few places that allow us to do what our community does. We are privileged to use this space, and we need to take excellent care of it. Our actions will guide the future use of this beautiful site.

**If something doesn't seem right, you are empowered to speak up** and report the situation to the Production Team or the Rangers (they have radios). Producers reserve the right to remove participants who contradict the spirit of the Code of Conduct. The Code of Conduct has been created by the community and we strive to create a healthy and respectful environment for everyone.





## Assumption of Risk

By purchasing or accepting a ticket, attending, or by participating in our event, you have or are entering into an Assumption of Risk (“waiver”). This waiver will impact your right to sue if you get hurt, so you should read it.

**Please read this disclaimer carefully and understand its terms before attending BitF. Please see the ticketing page or [this link](#) to review the waiver.**

## Personal Responsibility

You are solely responsible for your own well-being, actions, and choices while at BitF. You are responsible to ensure your own safety and the safety of your property. BitF assumes no liability for any injuries, accidents, or damages that may occur.

## Self-Sufficiency

BitF does not provide on-site vending or supplies. You are responsible for bringing everything you need, including food, water, camping gear, and any other necessary supplies. Please support the local economy by purchasing your supplies in Merritt, where possible.

## Compliance with Laws and Regulations

You are required to comply with all applicable laws, regulations, and policies while attending BitF. Failure to do so may result in immediate removal from BitF, and may subject you to legal consequences.



# ABOUT THE SITE

---



## **Water**

Potable water is available, though it may not be close to your campsite. We strongly recommend that you bring all the water that you'll need for the weekend!



## **Cell Reception**

The site has some cell reception. Please don't rely on the site having a phone signal; be prepared for no signal and enjoy logging off!



## **River**

The Coldwater River that runs through is mostly shallow, but can have fast currents and potential hazards. Never wash dishes or use any kind of soap or other products in the river. Please see 'Swimming in the River' below for more details.

## **Site layout**

The main site is fairly flat, with gravel roads and pedestrian pathways across fields and forested areas.





# GATE HOURS

---

## Entrance

### Event Gate Hours:

- Thursday, July 25: 11am to 11pm
- Friday, July 26th: 11am to 11pm
- Saturday, July 27: 11pm to 2:30pm



The gate closes at 11pm each night. Late arrivals will wait until 11am the following morning. **There will be no way to enter the event after the gate closes on Saturday!**

### Pre-registered early arrival:

- Tuesday, July 23 any time
- Wednesday, July 24 before 9pm

## Exodus

Participants may depart the event at any time, but there are no ins and outs.

**When you leave, you leave for good!**



### Monday July 29th:

- Everyone in Open Camping areas must have their personal camps packed up and cleaned up by **1 pm**.
- Theme camps and large art projects must be cleaned up and off site by **5 pm**.

The only people who may remain on site after 5pm on Monday are folks who signed up for DPW teardown and LNT crew shifts **IN ADVANCE** of the event. See remaining volunteer opportunities [here](#).

**No ins and outs! Have everything you need when you arrive.**

# DIRECTIONS

## Main Gate

Everyone must check in at the Main Gate with a ticket and matching ID.

Address: 1000 Midday Valley Rd

Search Google Maps: "Burn in the forest main gate"

Map Coordinates: 50°05'18.2"N 120°47'47.5"W







# ARRIVAL

---

## Main Gate

Upon arrival at the Main Gate our friendly gate volunteers will ensure that everyone has a ticket with matching ID, put on your snazzy wristband, and perform a quick inspection. Gate volunteers will provide information about BitF rules and consent policy and answer any questions.

## Forest Gate

Theme camps, artists and equipment deliveries going to the southern forested side of the site during regular gate hours will check-in first at the Main Gate and go to the Forest Gate afterwards. This process takes extra time so please arrive at least a half hour before gate closing time so that our Forest Gate volunteers aren't stuck waiting for you in the dark!

**Tickets are never sold at the gates.**

## Early Arrival

Participants helping with a theme camp, art project, or other pre-event volunteer responsibilities must pre-register for early arrival entry by filling out the [Early Entry Registration](#) no later than 11:59pm on Sunday, July 21st. Early entry is permitted Tues July 23 and Wed 24th before 9pm. Persons needing to access the Forest side are welcome to go straight to Forest Gate during the Early Arrival period. **Early arrivals:** *please attend Flow Hub* for your wristbands between 6pm and 9pm on Wednesday, July 24th.

## Camping Placement

Designated locations for theme camps, art, and production will be kept clear and open camping is not allowed in these areas. Open camping is located in the field on the north side of the river – *there is no open camping in the forest side!* Greeters and Parking volunteers will guide you to the designated open camping area.



# ACCESSIBILITY



BitF believes deeply in the Principle of Radical Inclusion. Our home in Merritt on the Coldwater River is relatively flat. However it is also a dusty field with many loose rocks, and it is quite a long walk end-to-end. We are committed to supporting people to meaningfully participate in our BitF community and would love to hear from you about any accessibility needs you may have. Please contact: [accessibility@burnintheforest.com](mailto:accessibility@burnintheforest.com)

Shuttle service is available to help those with mobility challenges access the site. Details found at: [burnintheforest.com/event/accessibility](https://burnintheforest.com/event/accessibility)





# PARKING

---

## **Parking Policy**

All vehicles must park in the vehicle parking area unless you're sleeping in your vehicle, using it for a theme camp, or need access to it for your specific accessibility needs. These vehicles must acquire a Vehicle Camping Pass from the Flow Hub at the bottom of the hill after gate entry. Please unpack and move your vehicle before setting up camp. Tow vehicles must unhitch and move to the Parking Area.

## **RVs and Large Vehicle Camping**

The RV Parking is available for any RVs and other large vehicles over 7 meters (25 feet) in length and/or with generators or other loud equipment.

We encourage any RVers who plan to leave Sunday to park in the RV Parking area to facilitate their exit!

## **RVs in Theme Camps**

RVs that are part of a theme camp should consider arriving as early as possible to ensure that they are able to navigate to their camp, as some core service roads will become unavailable once the event begins.

## **RV & Tent Groups**

If you are in an RV and want to park in Open Camping outside of the RV Parking area, please let our parking team know on site. They will assist you and determine whether this is feasible, based on where the rest of your group has set up camp and whether your vehicle can safely navigate to planned spots.

Our goal is to make this work for everyone, but please be prepared to be cool about being directed to the RV Parking if that plan doesn't work out! We strongly recommend arriving early and during the daylight hours to increase your chances of being able to camp in Open Camping.

For any questions regarding parking, please contact: [flow@burnintheforest.com](mailto:flow@burnintheforest.com).



# WHAT TO BRING

---

- Ticket
- Legal photo ID (must match ticket)
- Sleeping shelter
- Shade structure / parasol / tarp
- Flashlights/headlamps and spare batteries
- Lights to wear for visibility at night
- Comfortable footwear (several pairs!)
- Warm clothes
- Rain gear
- Food and water
- First aid kit
- Earplugs
- Sunscreen / sun hat
- Dust mask
- Single ply toilet paper
- Hand sanitizer
- Bug spray
- Portable cushion / chair

**RADICAL  
SELF  
RELIANCE**





### In case of emergency



Should a serious emergency arise, Ranger HQ on the field side of the bridge will be used as a muster station, and the Production Team and the Rangers will direct you. In the event that Ranger HQ is rendered inaccessible, please muster at the Forest Gate, unless otherwise directed.

### Grey Water



Bringing grey water containers is a best practice to truly Leave No Trace! Use phosphate free and biodegradable soap to wash up, at least 200 feet away from natural water sources (not near the river!). For those camping on the field side of the river, you may strain your gray water and dispose of it at the road along the bottom of the cliffs, making sure it is far enough back to not run into any camps.

### Food and Water



Again: you must bring all supplies with you! No in-and-outs are permitted to get supplies. Although there is access to potable water on site, bringing your own water is strongly recommended.

### Ice



Bring ice to keep your food fresh, or better yet, plan a menu that minimizes items that need to be kept in a cooler! Please practice self-reliance strategies, such as using ice blocks, dry ice, or bringing food you've frozen at home. Expect hot temperatures!

We will have a **limited supply of ice** provided free of charge to participants, compliments of GVIAS, on Friday and Saturday at noon by DPW. Find us at the bridge. First come first serve, and please share!.

### Shelter



Bring shelter and protection from the rain, sun, and insects. Prepare for all temperatures. The weather is unpredictable at this location, please be radically self-reliant and prepare for whatever nature throws at you, especially wind!

### LNT, Garbage and Recycling



There are no garbage/recycling collection bins onsite. Pack it in, pack it out! Please plan to bring garbage bags, bins, and enough room in your vehicle to leave with your garbage! And don't forget that part of LNT is keeping your campsite tidy, so that cleaning up after Exodus is easier.

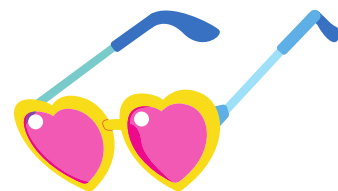


# CLOTHES

**Warm and Dry Clothes:** Merritt has significant temperature changes and occasional rain showers. It can be hot, cold, wet, and dry all in one day! Please bring additional warm and dry clothes. Accessories such as hats, scarves and thermal socks are particularly helpful, as well as comfortable, waterproof footwear to keep your feet warm and dry.

**Layering is key:** Dressing in layers allows you to adjust your clothing to changing temperatures. Start with a base layer made of moisture-wicking material to keep you dry. Add an insulating layer, such as a fleece or sweater, for warmth. Finally, top it off with a waterproof and wind-resistant outer shell to protect you from rain and chilly winds.

**Bring rain gear and dust protection:** While Merritt boasts many sunny days, it's wise to be prepared for rain showers. Consider bringing a lightweight, waterproof jacket, poncho, rain pants or skirt, and rubber boots. On the flip side, dust can be pervasive and very irritating, especially for those with breathing issues: consider bringing a mask or even a respirator if needed.







# WHAT NOT TO BRING

---



## Glass Containers

Even with the best intentions and safest handling, glass will break.

**No glass containers are permitted.**



## Pyrotechnics and Weapons

The only thing we want to see explode is your mind! Fireworks, firearms, and weapons are not allowed.



## Commerce or Vending

**Vending is strictly prohibited**, as are transactions of any type. We are not a commercial or consumer event, in alignment with the Principle of Decommodification. Never advertise or promote any business, band, DJ, etc. at BitF – leave your advertising handbills at home!



## Illegal Substances

Possession, sale, or consumption of illegal substances is a federal offence. Local law enforcement may be present during BitF to enforce these laws. BitF will cooperate fully with the landowner, their representatives, and the authorities.



## MOOP (Matter out of Place)

One of the founding principles is that we work together to Leave No Trace (LNT). This means leaving the BitF site in the same or better condition than you found it. This also means that you should NOT bring items that are prone to creating MOOP, such as feather boas, glitter paint and makeup, stick-on gems, loosely sewn sequins, etc. We appreciate your costumes, but if it's leaving a trail of MOOP behind you, just don't bring it!



Try on your costumes at home: If you find MOOP from it on your floor or couch, leave it at home!

Eliminate packaging waste: Reduce the amount of single-use packaging and remove extra packaging at home so that you don't need to pack it out! Opt for reusable containers, water bottles, and utensils.





# HOW TO HAVE A GOOD TIME



## Participate!

Your participation is what makes BitF magical! In addition to the 10 guiding Principles that shape burner events, the most significant difference between a "typical" festival and events like BitF is the level of participation.

Unlike commercial events where you simply pay admission and become a spectator, at BitF, all activities, stages, theme camps, workshops, art, and performances are independently produced by BitF participants who bought the same-priced ticket that you did, and offered free of charge for the benefit of the community.

**YOU are welcome here!**  
Step out of your comfort zone, embrace the experience, and get involved!



## Radical Self-Expression!

Radical Self-Expression is a fundamental part of the Burner experience, aligned with Radical Inclusion! You are encouraged to be yourself or to express yourself as boldly as you desire, while also ensuring everyone feels welcome. So go ahead, let your true self shine!

If you find inspiration through exploring and appreciating cultures and practices different from your own, we encourage you to research and be prepared to discuss your choices. Cultural insensitivity can unintentionally exclude community members, so it's important to listen respectfully and accept feedback gracefully.

Together, let's strive for inclusivity and expressive freedom!



## Gift your Passions!

The beautiful tapestry of citizen contributions is what makes BitF special.

Participants dedicate their time and efforts to their passions, building and sharing their amazing gifts with others.

During BitF, visit Centre Camp to find out where you can share your talents!





# BitF 2024 THEME

Prepare to be swept up in a sudsy whirlwind of delight, as Burn in the Forest 2024 embraces the effervescent theme of “Bubbles!”

Join us to create and pop some serious bubbles, and have a blast doing it!

Imagine a kaleidoscope of iridescent spheres dancing and shimmering through the sky, filling us with laughter and delight!

BitF will be bubbling with creativity, and we can’t wait to see your variations and interpretations of this theme carried through the winds of our beautiful Merritt site July 25–29!

Many thanks to our community for sharing over five dozen different theme ideas! We truly appreciated the thought that so many of you put into your suggestions.

## **A note about Bubble Safety!**

We’ve consulted multiple experts, who’ve advised that the fast flow of the river means that some bubbles here or there hitting the river will be quickly diluted sufficiently to mitigate the risk.

Please do your best to keep bubbles away from the river! Any bubble machines should push the bubbles into the forest or field, away from the direction of the river.

Please refill any bubble devices over a spill tray or solid surface like a table, NOT at the river or over bare dirt! The concentrated bubble fluid is more difficult for the soil to break down and filter.

Let’s keep bubbly fun away from the river to minimize our impact and protect the aquatic environment!





# VOLUNTEER



BitF is a purely volunteer organized and created event – thank YOU for being part of it!

We don't have paid production staff putting the event together -- everyone pitches in to make nearly every aspect of the event happen. We all contribute to the magic of BitF - **there are no spectators!**

This is one of the key differences between BitF and other #GenericSummerFestivals. This is what makes regional Burning Man events so special, knowing and seeing that each of us contributed to the transformative and amazing experiences we're all having!

Head on over to the [VOLUNTEERING section on the website](#) to learn more about getting involved and see what areas are still looking for people.





# WHAT WHERE WHEN & SITE MAP

## NEW for 2024!

The What Where When is the definitive guide to camps, art, and events at BitF. We're excited to announce that this year we're going digital using an incredibly handy app made by a fellow burner called DUST.

Dust is an offline unofficial app for Black Rock City and Regional Burns, a gift offering from the app creator. Several Regional Events have been using it for a while now with great success!

- *NOTE: you will have the option to get a printed 11x17 event map at Gate, and you can choose to print the WWW in advance at home if you prefer not to be on your phone during the event.*

We're going to try it this year, and then we'll collect and review post-event feedback on how you thought it went. We'll be listening!



Download the DUST app NOW to start reading up on camps, music, events and get familiar with the event site map. Poke around and check out the various sorting options, search feature and category views in the app and start making your favourites list by starring camps, art, events & DJs! You can choose to print your FAVES list before the event as well.

Read the info on how to access and download the app **BEFORE THE EVENT**, here:

What Where When – your guide to BitF! (<https://burnintheforest.com/event/www2024/>)

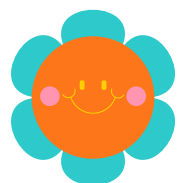
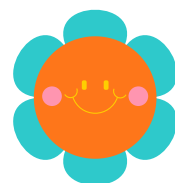
Once the map is finalized, it will also be available **IN THE APP** and on the website under Event Guide at BitF 2024 Event Map (<https://burnintheforest.com/event/info/bitf-2024-event-map/>)



**AVAILABLE MONDAY JULY 22**

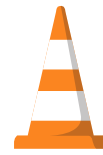
**Download the print-at-home What Where When guide here:**

What Where When – your guide to BitF! (<https://burnintheforest.com/event/www2024/>)



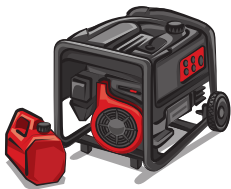
# SAFETY

---



## Radical Self-Reliance

Discover, exercise and rely on your inner resources. While BitF provides foundational resources and oversight to support our community, it is essential that every individual takes responsibility for their own well-being, including exercising responsible judgement and taking care of oneself. We encourage everyone to embrace this spirit of self responsibility and actively contribute to the well being of the entire BitF community.



## Generators

If you bring a generator, you must follow these important rules:

- Place generators on a spillage tray; never allow fuel spillage
- Never run generators late at night or early in the morning (11pm-9am)
- Place your generator far from other campers
- Direct the exhaust away from sleeping areas
- Secure power cables to prevent trip hazards
- Never leave generators running unattended
- Any contaminants on the ground must be cleaned immediately
- Refuelling must take place on a spillage tray



## Swimming in the River

Swimming in the river is at your own risk, and BitF assumes no liability for any accidents or injuries that may occur in or near the water.

The river serves as a vital habitat for salmon spawning and egg-laying: please avoid wearing bug spray, perfume, lotions, or any skin or hair products while swimming to minimise any negative impact on the river ecosystem.

Closely monitor children at all times and ensure they are supervised while swimming in the river.

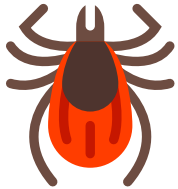
Additional swimming information or specific instructions may be provided on-site – please obey any posted signage.



## Trees and Shade

While there are some areas with trees, the main camping areas where open camping and many theme camps are located are predominantly open spaces. Please come prepared with your own shade structures, as trees for shade are limited, and we must respect and preserve the existing trees and natural surroundings on-site.

Please refrain from cutting or damaging trees under any circumstances.



## Bugs

Here are some guidelines to help you navigate buzzing critters:

- Mosquitoes can be pesky, so it's recommended to use repellents containing DEET for effective protection. Cream-based products are a good choice as they tend to stay on the skin longer, even when sweating; but not good for swimming. Stay out of the river after applying anything to your skin.
- In case of bug bites, it's helpful to have After-Bite or similar remedies on hand to calm the itching and irritation.
- Keep your tent bug-free by keeping it zipped tight at all times.
- If you have allergies to insects, please bring and carry needed medications and/or your Epi-Pen.
- Most ticks encountered at Merritt are wood ticks that do not carry the bacteria responsible for Lyme disease. Regardless, it's always best practice to check yourself for ticks during and after the event!



## Fire



The Effigy will not be burned this year. Due to ongoing forest fire risks, only **pre-approved** fire performances are permitted at BitF.

**No candles, cigarettes, propane fire pits, or open flames of any kind are allowed under any circumstances.**

Only CSA-certified (unmodified) cooking appliances and outdoor flameless enclosed heaters are permitted. Be extremely careful and monitor these at all times; these should never be left unattended. If costumes, grass, etc. can make contact and instantly catch fire then it's realistically an open flame and is **not** allowed.

Always keep a fire extinguisher in sight, and keep a bucket full of water at your camp in case of grass fires.





## Driving

Speed limit is 8 km/hr! There are children, and Burners acting like children, running around, and driving faster raises more dust that everyone chokes on!

Always drive slow and safe!



## Rangers

You can find Rangers patrolling BitF in pairs wearing blue BC Rangers t-shirts and with radios. Find the Rangers at Ranger HQ, on the field side of the bridge.

The Rangers are burners who volunteer to help their fellow burners. The Rangers act as a source of information, respond to emergencies, help participants find their way, and mediate disputes, amongst many other duties.



## Medics and Security

Medics and Security are on-site 24 hours a day. Access their help at the medic station or by asking a Ranger or Production member (anyone with a radio). The Medic station is located on the field side of the bridge, while Security is located near the gates.





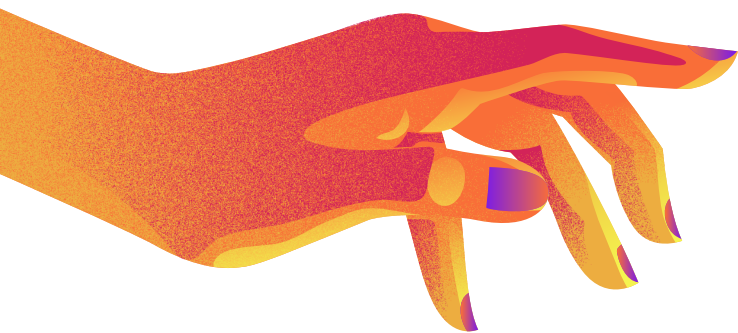
## Ask Wellness – Harm Reduction

Harm Reduction, located on the field side of the bridge, aims to provide tools, strategies and education to empower people to protect their own health and safety.

Harm reduction is guided by kindness, compassion, and respect for all.

Ask Wellness provides on-site education, substance testing and harm reduction supplies.

**Ask Wellness is open 2pm-11pm Thursday/Friday/Saturday & 12-2pm on Sunday.**

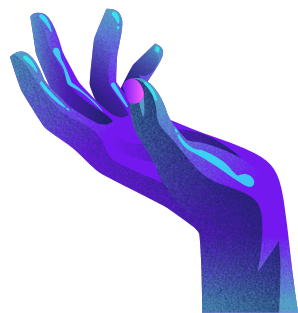


BE KIND  
TO YOUR  
MIND

## Sanctuary

The Sanctuary is a safe space for everyone that provides a quiet, calm, comfortable area to relax and regroup. Peer support is available by volunteers guided by harm reduction and trauma-informed principles.

**Sanctuary is available 24 hours a day, from Thursday at 6pm and continues 24/7 until Monday at noon, in the Field Zone tucked in just past the bridge.**

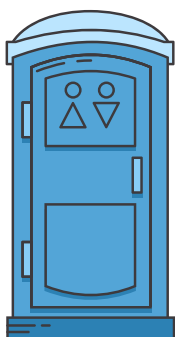


## Children

**Never leave children unattended.**

There may be adult subject matter that is inappropriate for children at BitF and there are physical risks at the site.

Be aware that full nudity is permitted in this community.



## Porta-Potties

***If it doesn't come out of your body, do not put it in the porta-potty!***

The ONLY exception is septic-safe, single-ply toilet paper.

- No garbage, tampons, paper towels, or septic-approved wipes of any kind.
- No standing/squatting on the seat.
- Keep it clean for everyone's health!
- Put the seat down when you exit to minimize smell!

## Lasers



Personal hand-held and body lasers of any kind are strictly prohibited. Any unapproved lasers found during the event will be confiscated, and expulsion may be considered.

Artists wanting to include lasers as part of an installation must seek pre-approval from BitF Production prior to the start of the event.

## Drones

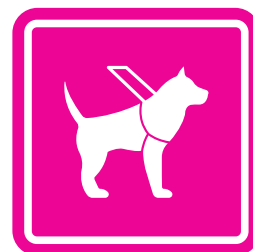


All drone operators must register their drones with the BitF organisers before the event. Not during BitF! Failure to comply with the below Policy will result in drone confiscation and/or expulsion from the BitF. Refer to the [GVIA Drone Policy](#).

## Service Dogs

No pets or animals other than certified service dogs are welcome at BitF. If you plan to attend BitF with your certified service dog, please contact: [safety@burnintheforest.com](mailto:safety@burnintheforest.com) in advance to let us know.

Service dogs are to be leashed at all times while at BitF and must not interfere with the enjoyment or safety of others. Owners must clean up after their service dogs.







## Photos and Videos

Photographers are required to obtain written consent before posting images of individuals.

- Images, videos and audio recordings taken for any commercial purposes are strictly prohibited; this includes sharing content on commercial social media accounts.
- Photos of nudity are strictly prohibited.

**Always ask for permission before taking anyone's photo.**



## Alcohol and Cannabis

**Consumption is only allowed within a designated campsite.** Minors are never allowed to consume or hold alcohol or cannabis.

Alcohol and cannabis are not allowed to be consumed in public places like roads, fields, or rivers.

The Greater Vancouver Interactive Art Society (GVIAS) complies with all local and Provincial laws.



To maintain a safe and responsible environment for personal alcohol and cannabis consumption at BitF, we require everyone to follow these additional rules:

### Storing Alcohol and Cannabis

- Alcohol and cannabis must be stored in a concealed, semi-secure area that is not easily accessible.
- Never leave alcoholic beverages or cannabis items unattended.
- No obvious transport of alcohol or cannabis between campsites.

### Camp Leads' Responsibilities

- Camp leads monitor the level of intoxication of their campmates.
- Overly intoxicated guests should not consume more alcohol or cannabis.
- Camp leads should ensure guests do not leave the campsite with alcohol or cannabis.

# Mutant Vehicles

## Registration and Safety Inspections

All mutant vehicles must be registered and undergo safety inspections before they can operate at BitF.



## Restricted Speed and Driving Areas

- Speed limit is 8 kmph. Mutant vehicles must follow specific driving areas designated by BitF Production.
- Mutant vehicles must not cross the bridge without explicit permission from BitF Production.

## Sound

- Mutant vehicles that emit sound or play music must follow BitF's sound rules, including limitations on volume levels, noise curfews during certain hours, or specific zones where amplified sound is permitted.

## Lighting and Visibility

- Mutant vehicles must have lighting and illumination for clear visibility. Install functional headlights, taillights, and reflectors to ensure visibility during nighttime operations.

## Respect for Participants and Art Installations

- Exercise respect for the participants, art installations, and theme camps while operating your mutant vehicle. Avoid obstructing art installations or impeding the flow of pedestrian traffic.

## Compliance with Local Laws

- Mutant vehicle operators must comply with all local laws and regulations, including vehicle registration, driver's license, and insurance requirements.



# Sound



Amplified sound in sound stages require pre-approval.

- Stages in the Forest Zone can go daily from 12pm to 6 am and only until 2 am on the event's last night, Sunday (technically Monday morning!).
- Theme camps on the north side of the river can go until 10 pm.
- No amplified sound between 6 am and noon.

All theme camps with sound must follow the BitF/Merritt sound policy.



## Boundaries & Consent

At BitF, **consent plays a crucial role** in order to create a space for radical self-expression. To prevent harassment and assault, we must understand and respect each other's boundaries. Everyone must be responsible to navigate the intersection between self-expression and the boundaries of others through clear communication, especially given the diversity of our community.

**Consent applies to ALL of our interactions with each other**, not just intimate connections!

- **When it comes to interactions, enthusiastic and explicit consent is the only acceptable form of consent. Anything less than a resounding 'yes' is NOT consent. The absence of a 'no' does not equal a 'yes'. Consent is given freely, and can be withdrawn at any time.**
- Creating an environment founded on consent acknowledges that a person has autonomy over their own body and respects each person's decisions, and knowledge that they know what is best for themselves. Coercion or emotional manipulation to obtain consent is strictly prohibited, and persistent violation of consent boundaries may result in expulsion from BitF.
- **Effective communication is key.** Consent for one thing does not imply consent for anything else. Be aware of your personal boundaries and feel comfortable expressing them. Remember that comfort levels can vary at different times and with different individuals. Always seek and respect the boundaries of others, even if you have prior familiarity with someone.
- **Mindfulness regarding substances is crucial and healthy.** According to Canadian law, individuals under the influence of substances are unable to give consent. You must be aware of your own state, and the state of others, when engaging in any interactions with people, artwork, and general surroundings.
- If you find yourself in a situation involving threatening behaviour, violence, abuse or assault of any kind (e.g. physical, emotional, sexual, cultural, racial) there are protocols and support systems in place. **Seek assistance from any person with a radio** (Ranger or Production member), visit Ranger HQ on the field side of the bridge, or go to the Medic Station on the field side of the bridge for immediate help.





## Evictions

Evictions are final and at the discretion of the Producer On Call, with the endorsement of the Directors on Call.

Offences that may initiate eviction include but are not limited to:

- No wristband or proof of ticket
- Failure to follow the fire or sound policy
- Photography without permission
- Vending or commerce
- Vandalism or property damage
- Leaving children unattended
- Use of pyrotechnics or fireworks
- Possession of a weapon
- Failure to follow the GVIAS Participant Code of Conduct
- Failure to respect boundaries





We extend our deepest gratitude and a heartfelt thank you to the **Nlaka'pamux** people, the original stewards of the land on which BitF takes place – their enduring strength and presence reminds us of the importance of respect, reciprocity, and honouring the land.

We would also like to extend our genuine appreciation to each and every one of you who attends this year's BitF. Your presence and active participation truly makes BitF 2024 a remarkable experience. We are immensely grateful for your enthusiasm, creativity, and commitment to the principles that define our burner community.

A special thank you and appreciation for all whose unwavering commitment, passion, and the countless hours of hard work were dedicated to making BitF 2024 an extraordinary experience for everyone! Thank you, to:

- **Theme Camps**, for creating welcoming environments, fostering connection, and contributing to the collective spirit of our event.
- To the **Artists**, whose extraordinary works of art have brought wonder, inspiration, and awe to BitF.
- To the **Sound Camps** for curating exceptional lineups, amplifying the Burner spirit, and becoming the pulsating heart of BitF.
- A deep appreciation to **Ask Wellness** for their invaluable contribution to keeping us safe.
- To the **GVIAS Board Members** for your wisdom, support, and commitment to our shared mission.
- To the **GVIAS Committee Members** for your invaluable contributions, support and for upholding the core values of our community.
- To the **Burn in the Forest Committee Production Team**, whose work behind-the-scenes is the backbone of our event, and for going above and beyond to ensure a seamless and immersive experience for all
- To **Team Leads** for your dedication, mentorship, and the countless hours you have invested in making our event a resounding success.
- Last, but not least – **thank you to the Volunteers!** Your enthusiasm and positive energy were invaluable. We thank each and every one of you for donating your time and skills to make BitF 2024 extraordinary!

We wish every burner a safe and wonderful experience.  
May the memories created and the connections forged during BitF 2024 continue to inspire and uplift you in the default world.

# Welcome Home!

- GVIAS and the BitF 2024 Production Team

